

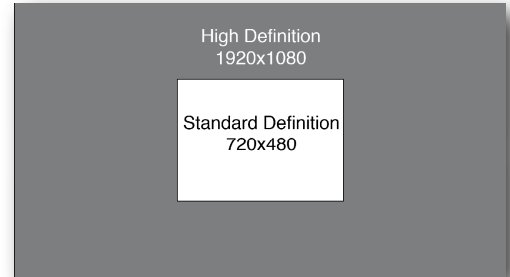
# ProTip

## Genuine Fractals 6

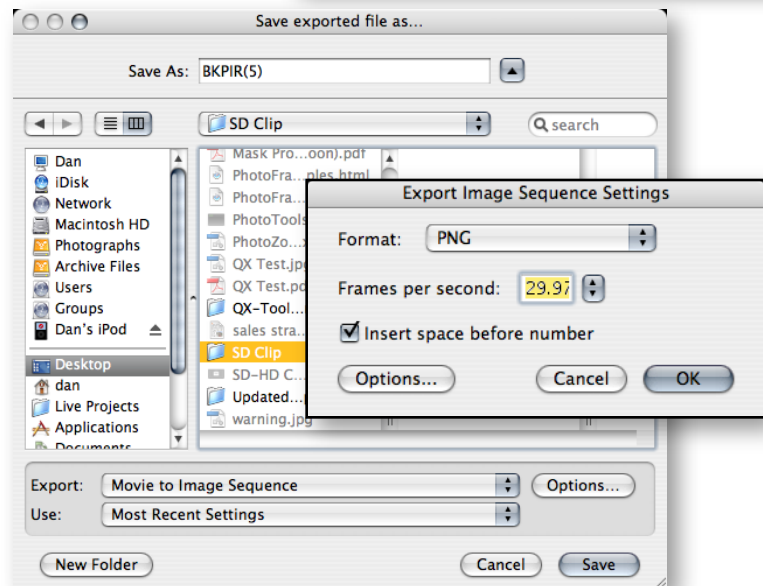


### Resizing Standard Definition Video Clips to High Definition

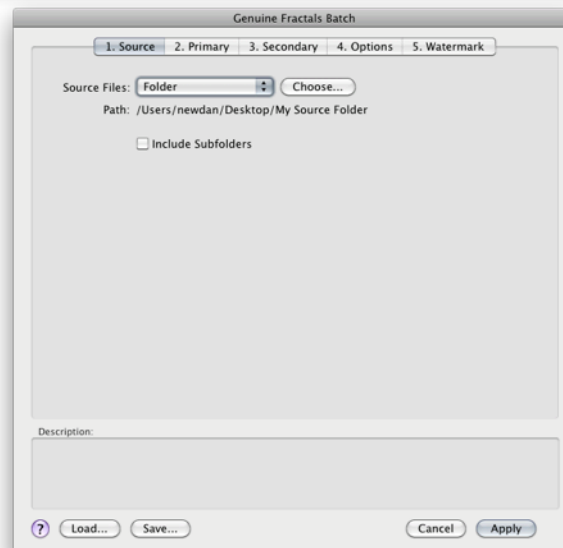
The high definition digital video revolution is well underway. However we all have plenty of old standard definition footage laying around. It's not uncommon to want to integrate some of that SD footage into your new HD production. Because of the big size difference between SD and HD you can't just resize it in your editing application and get sharp results. Instead follow these steps to use Genuine Fractals to get superior results.



**1** Open the clip in your video editing application. Select all and export the clip to still frame images. The steps to do this will vary depending on your video editing application. Be sure to export the frames to the same location. You will also want to deinterlace your footage first if needed. This usually an option in the export frame dialog.




**2** Open the Genuine Fractals 6 Batch dialog from the File > Automate menu inside of Photoshop. In the source tab select the folder you saved the frames out to.

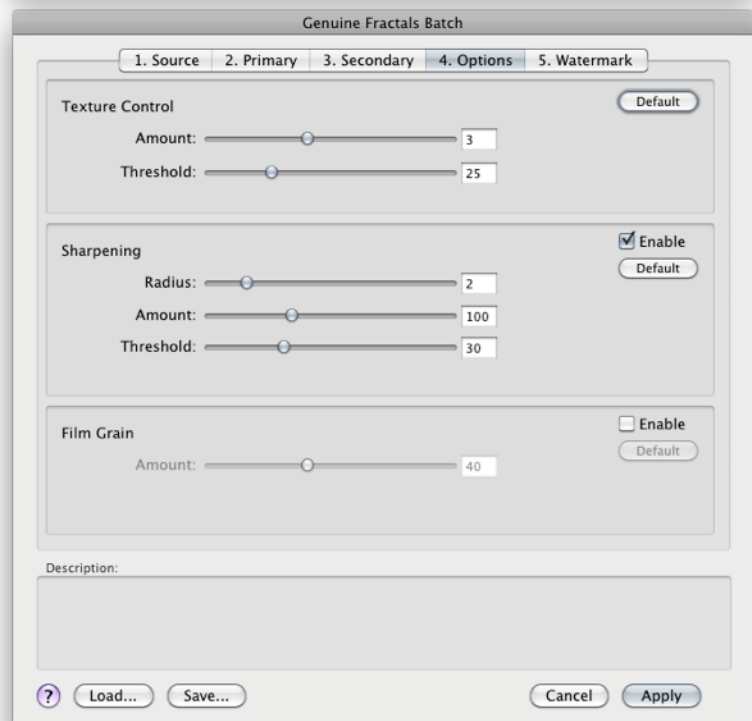
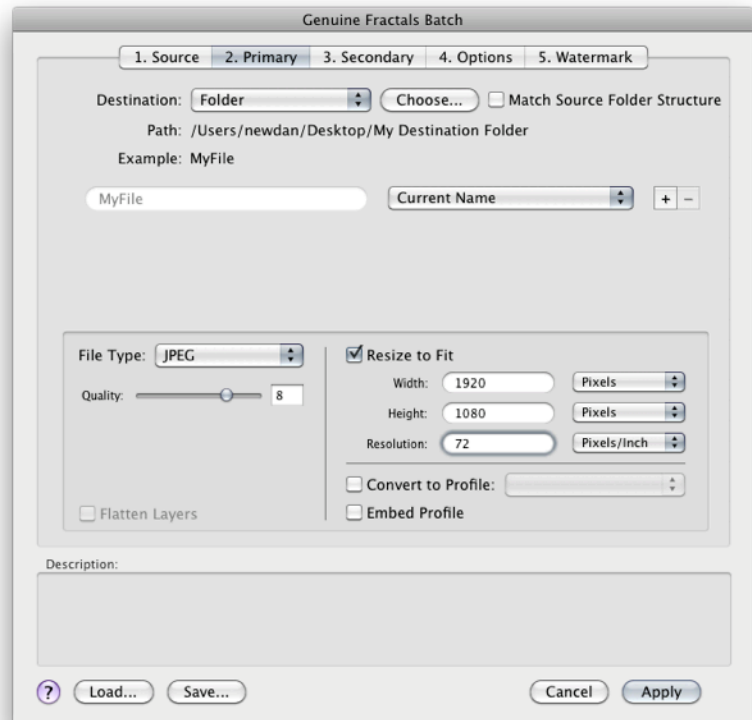


**3** On the Primary Tab:

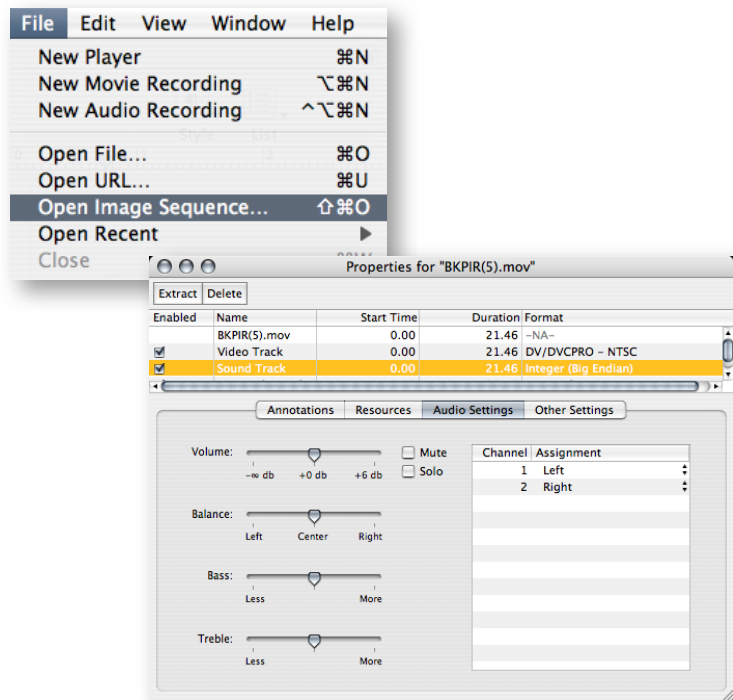
- set the Destination to the Folder option and browse to a new, empty folder for the destination files.
- Set the name of the output files. Generally the Current Name option is best.
- Set the File Type to Same as Source.
- Set the Width and Height appropriately.


 Remember that SD and HD have different aspect ratios. Genuine Fractals will always fit the frames inside the dimensions you select. For example SD footage will create 1620x1080 frames. The footage will appear letterboxed in your video editor. If you want your footage to fill the frame, set the width AND height to 1920. This will create oversized 1920x1280 frames, the top and bottom of which will be cut-off in your video editor. If you need additional control over the cropping use Genuine Fractals on the first frame while recording an action. Then use Photoshop's Batch dialog to automate the cropping and resizing of the frames.

**5** On the Options tab set the Texture Control and Sharpening options as desired. The example to the right will work with most footage.



**6** Once Genuine Fractals has completed its processing you will need to assemble the still frames back into video. Use your video editing applications feature for doing this. This will vary from application to application. You will then need to extract the sound from your original SD track and add it to your new HD track. Be mindful of the framerate for both clips to make sure the audio aligns properly with the video.



 *This technique is only for short clips, not entire productions. Every 60 seconds of SD footage will create about 1800 still frames and take up 1GB of storage space (PNG). When Genuine Fractals is done, those same 1800 files will take over 3 GB of storage. It will also take a long time to process this number of frames.*